



**AUSTEN CRESCENT**  
Liden, Swindon, SN3 6JX

  
**PRIMARY**  
HOMES & LETTINGS



## Austen Crescent, Liden, Swindon SN3 6JX

- AVAILABLE NOW
- Mid Terrace House
- Two Bedrooms
- NEWLY RENOVATED
- Allocated Parking With Additional Visitors Spaces
- NEW Boiler
- NEW Kitchen
- NEW Bathroom
- Enclosed Rear Garden
- Excellent Location

**£1,150 PCM**



**\*\*\* AVAILABLE NOW \*\*\*** We are delighted to offer this **NEWLY RENOVATED** two bedroom mid terrace house located in the popular area of Liden, within easy access to all local amenities, schools, Great Western Hospital and transport links such as the A419 & M4 motorway. The accommodation comprises of entrance porch, living room, kitchen/breakfast, two bedrooms and bathroom. Property also benefits from allocated parking with additional visitors spaces to the front, enclosed rear garden and gas central heating.

#### **Tenant Information**

Length of Tenancy: Long term let with initial tenancy agreement of 6 months

Council: Swindon Borough Council

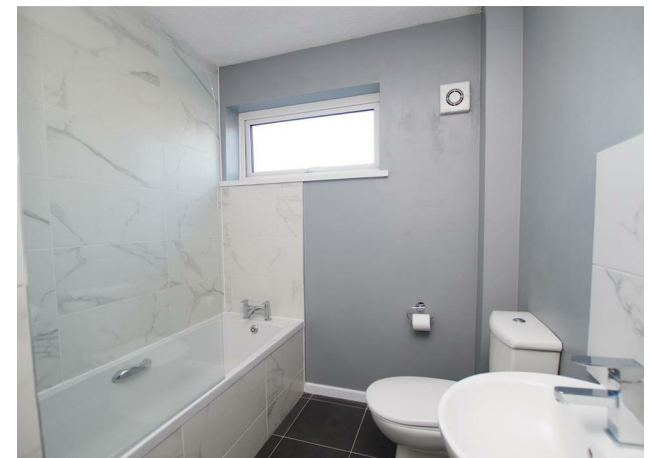
Tax Band: B

#### **Sizes**

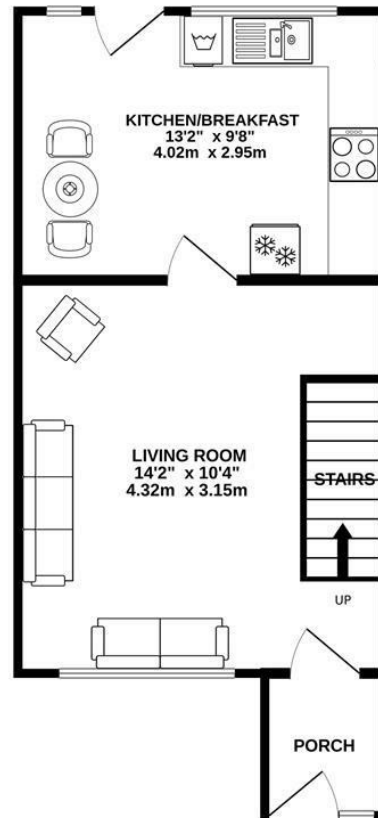
Please note, all measurements of room sizes given are not guaranteed and figures are for guidance only.

#### **Viewings**

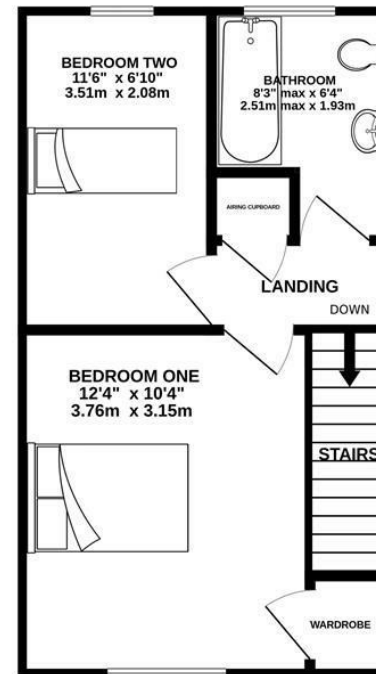
Strictly via our Swindon office telephone (01793) 641641.



GROUND FLOOR  
337 sq.ft. (31.3 sq.m.) approx.



1ST FLOOR  
315 sq.ft. (29.2 sq.m.) approx.



TOTAL FLOOR AREA : 651 sq.ft. (60.5 sq.m.) approx.

Whilst every attempt has been made to ensure the accuracy of the floorplan contained here, measurements of doors, windows, rooms and any other items are approximate and no responsibility is taken for any error, omission or mis-statement. This plan is for illustrative purposes only and should be used as such by any prospective purchaser. The services, systems and appliances shown have not been tested and no guarantee as to their operability or efficiency can be given.  
Made with Metropix 62025



**01793 641641**

101 Commercial Road, Swindon, SN1 5PL

**info@primaryhomesandlettings.co.uk**

